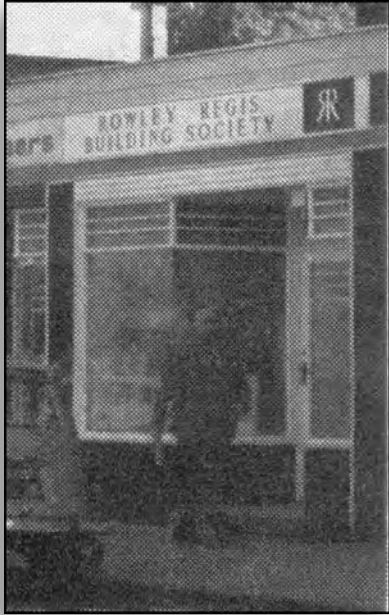


82 WORCESTER ROAD



This was Lloyds Bank before it moved to the present site.


It later became The Rowley Regis Building Society, then The Heart of England Building Society before being taken over by Cheltenham & Gloucester.



It was opened as a pet shop but closed down in 1995.

WHEN YOU WISH TO SAVE . . .
OR
YOU NEED A HOUSE PURCHASE LOAN
REMEMBER US !

The only Building Society with a
full Branch Office in your community.

ROWLEY REGIS 
BUILDING SOCIETY

82 WORCESTER ROAD, WEST HAGLEY, WORCS.
Telephone: Hagley 5237
Chief Office: 223, Halesowen Road,
Cradley Heath, Walsley, Worcs.
A Member of The Building Societies Association



It open as Village Flowers in 1995 run by Joan McElhannon.



It became Crazy Daisies January 2010. Closed 2015.

MARY STEVENS HOSPICE BOUTIQUE

Opened October 2015
Closed 2020



Opened as HOUNDS OF HAGLEY 2021

